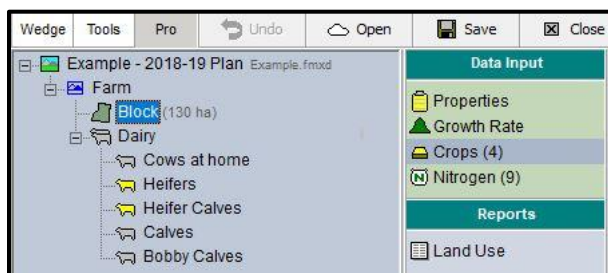


## Entering and Tracking Crop Data

### Updating your crops:

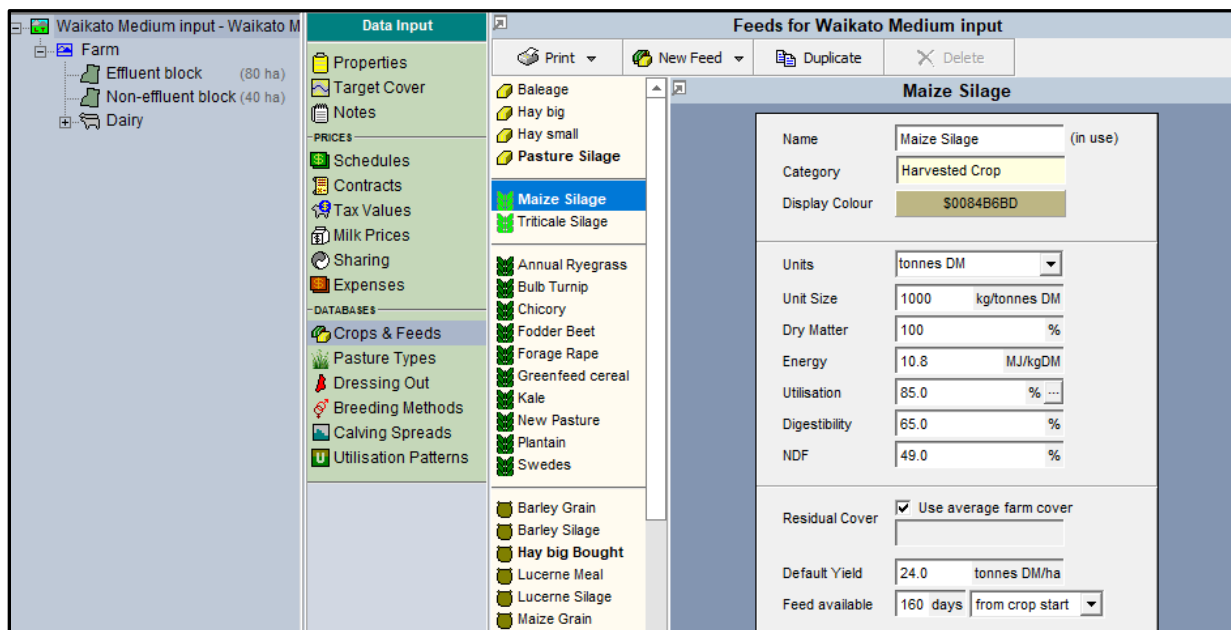
Whether you're watching your early sown maize flourish on-farm or looking at growing a summer crop of kale, accurately incorporating any crops into your feed budget is critical for optimal production of summer and autumn feed. It is important to updated planned crop events, in order to get an accurate forecast of your feed supply.

To update crops, first click the block the crops is on in the tree. Then move across to the Data input section and click 'Crops'.



### Custom Crops:

If you have specific test data for your crop e.g. Dry Matter analysis or energy composition, you can make your own crop and edit the 'Crops & Feeds' database values by selecting the 'duplicate' button on an existing feed.



Once added at the block-level crops screen, ensure that **area**, **dates** and **yield** of the crop represents your expected targets or what has already happened on farm. The **date in** and **date out** should reflect the dates the crop area is no longer available for grazing. For example, the date in might be the date the



area is sprayed out in preparation for the crop or the date that the paddock is shut up for conservation. The Date Out should be the date the area is again in pasture and available for grazing.

You can now use your accurately entered crop to assess different feeding options over the summer period, and the impact on performance through later parts of the season.