

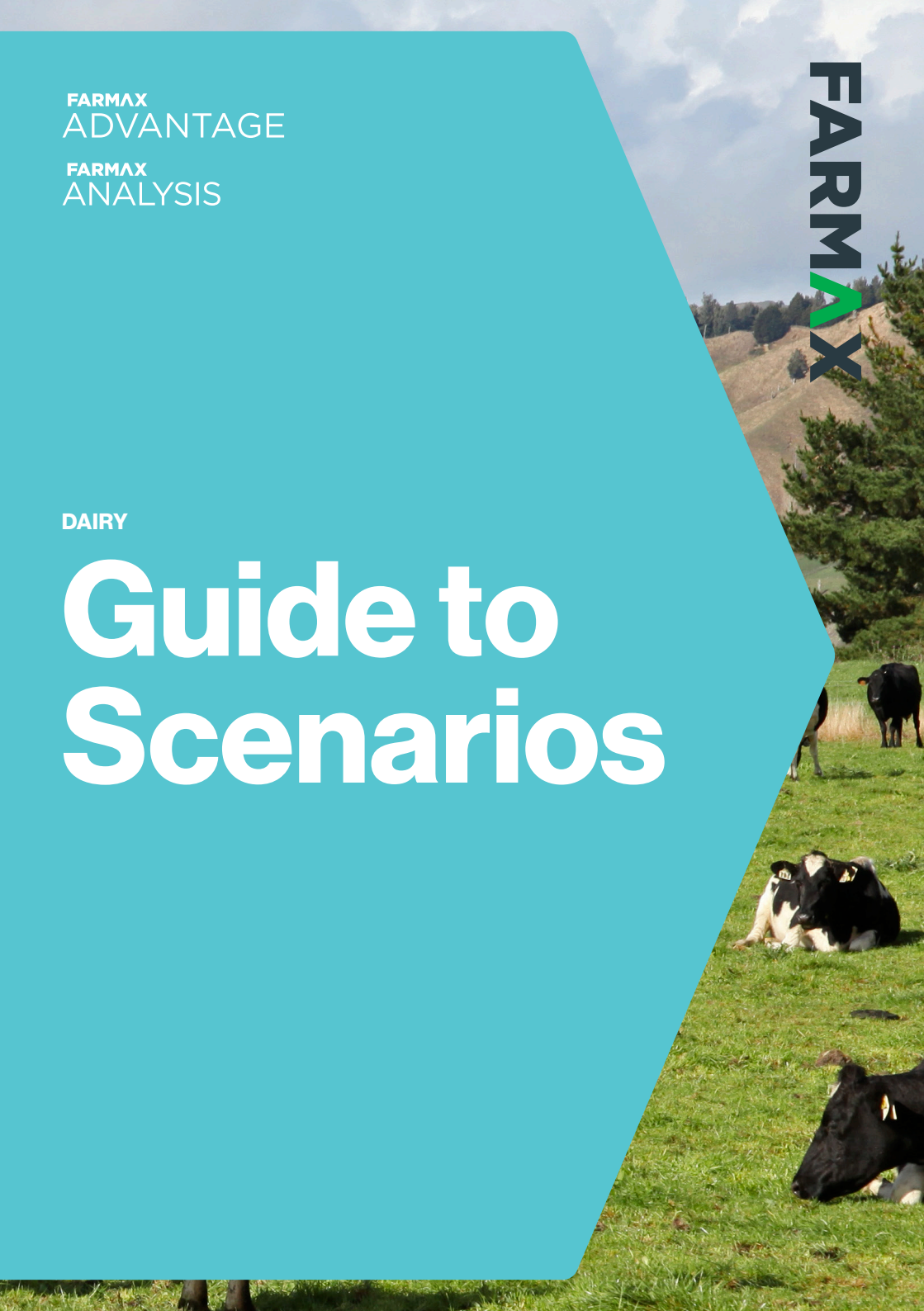
FARMAX
ADVANTAGE

FARMAX
ANALYSIS

DAIRY

Guide to Scenarios

FARMAX



Contents

2	Foreword
5	Short-term scenarios
6	Create a base file
6	Duplicate and rename the file
7	Open the duplicated file
7	Update the file
8	Open multiple files
9	Compare reports
11	Long-term scenarios
12	Create a base file
12	Duplicate and rename the file
13	Open the duplicated file
14	Converting to long-term mode
15	Update the file
16	Open multiple files
17	Compare reports

Foreword

This FARMAX Guide to Scenarios will support you to undertake scenarios in FARMAX - a powerful tool that can help you make confident, future-focused decisions.

FARMAX's value lies in its ability to analyse and compare different scenarios to help you determine which option is best for you. In FARMAX you are able to undertake as many scenarios as you need or want.



Overview

This FARMAX guide outlines the two types of scenarios and the process to undertake them:

1. Short-term scenarios
2. Long-term scenarios

Short-term scenarios investigate possible strategies to utilise feed surpluses or mitigate feed deficits to get through to the end of the season in good shape.

Long-term scenarios investigate possible farm system change strategies that would take two or more seasons to transition to.

How FARMAX works

All the data and information which is entered into FARMAX is combined and the model analyses how the feed supply compares to feed demand.

Once the farm has been set up in FARMAX it will produce a variety of outputs, including profitability and pasture covers, which can be used to support real-time on-farm decision making.

Data entry is an important process to get right to ensure you get the maximum value out of FARMAX. The more accurate the information is that goes into FARMAX, the more accurately it can provide outputs to support confident decision making.



SECTION 1

Short-term scenarios

Create a base file	6
Duplicate and rename the file	6
Open the duplicated file	7
Update the file	7
Open multiple files	8
Compare reports	9

Create a base file

Activity

To run a short-term scenario, you will need to have created a base file for the farm; this can either be the Monitoring or other base file.

Duplicate and rename the file

Activity

After you are satisfied with the base file, select **Save** and then **Close**.

Now, click **Open** to see the FARMAX Cloud window. To duplicate the base file, right-click on the appropriate file and select **Duplicate File**.

After you have selected **Duplicate File**, a pop-out will appear in which you will be able to type and rename the file, appropriate to the scenario you will analyse, for example, Extra Supplement.

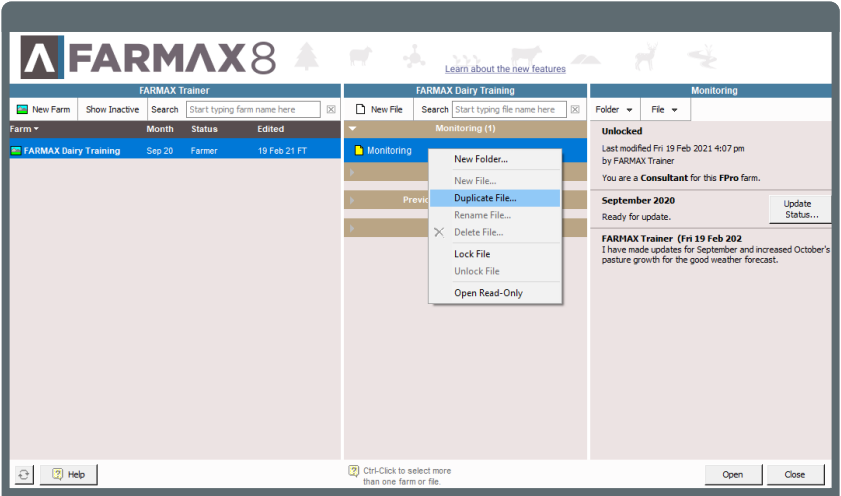


Figure 1: Cloud window

Open the duplicated file

Activity

Select the new file in the FARMAX Cloud window and then click **Open**.



Figure 2: Cloud window

Update the file

Activity

You will now be able to make changes to the FARMAX file in order to take advantage of opportunities or to mitigate challenges.

Possible options include:

- Changing stock sales
- Purchasing in more stock

- Removing or adding nitrogen
- Buying in supplement
- Altering cropping policy

Once you are satisfied with the scenario in FARMAX, select **Save** and then **Close**.

Note: Repeat steps 2, 3 and 4 multiple times if needed to analyse a range of different strategies before deciding which option is best for you.

Open multiple files

Activity

Click **Open** in the top-left corner to see the FARMAX Cloud window. Now, hold the Ctrl button and select the base file and the scenario files, before clicking **Open** in the bottom-right corner.



Figure 3: Cloud window

Compare reports

Activity

Multiple FARMAX files will now be open at once. Select the **All Farms** level and browse through the Compare Reports section to compare the different scenarios and the base system.

The Compare Reports section supports you to analyse each scenario and identify which is best for you.

Note: For purposes of short-term scenario analysis, do not use Combined Reports.

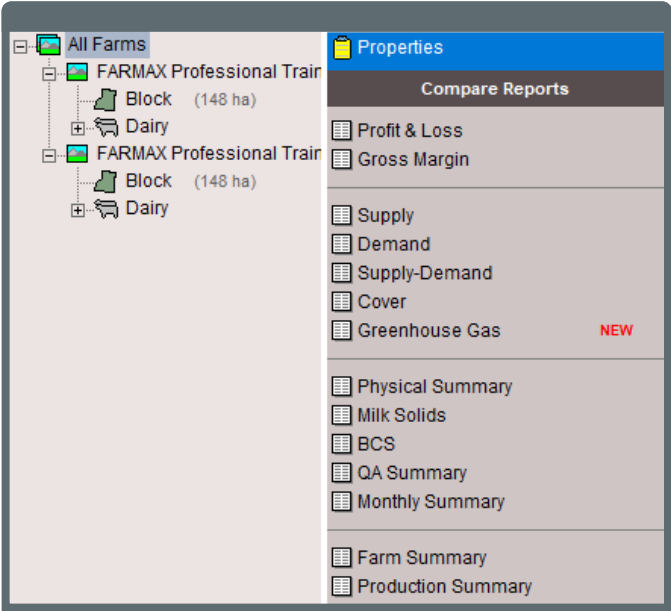


Figure 4: Compare reports



SECTION 2

Long-term scenarios

Create a base file	12
Duplicate and rename the file	12
Open the duplicated file	13
Converting to long-term mode	14
Update the file	15
Open multiple files	16
Compare reports	17

Create a base file

Activity

To run a long-term scenario, you will need to have created a base file for the farm; this can either be the Monitoring or other base file.

Duplicate and rename the file

Activity

After you are satisfied with the base file, select **Save** and then **Close**.

Now, click **Open** to see the FARMAX Cloud window. To duplicate the base file, right-click on the

appropriate file and select **Duplicate File**.

After you have selected **Duplicate File**, a pop-out will appear in which you will be able to rename the file – Long-term Base.

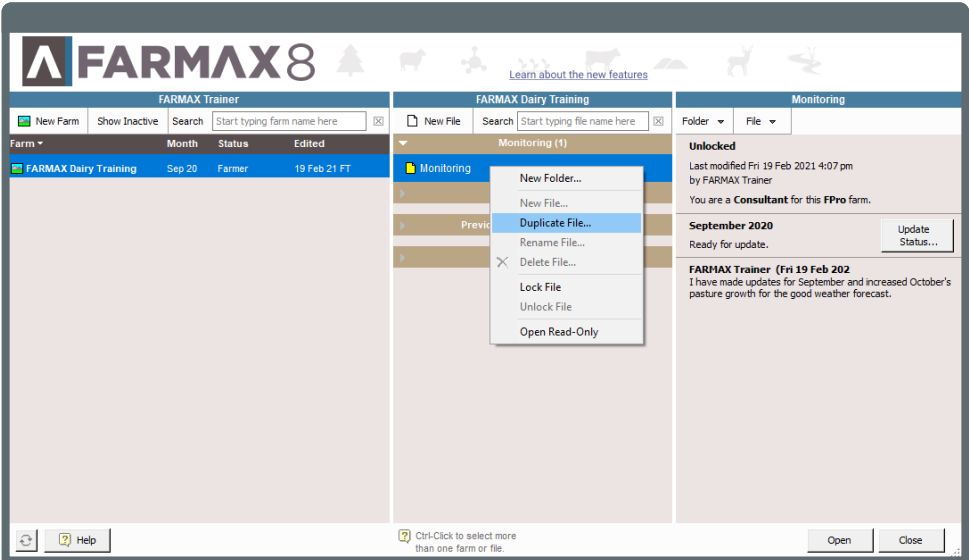


Figure 5: Cloud window

Open the duplicated file

Activity

Select the duplicated file in the FARMAX Cloud window and then click **Open**.

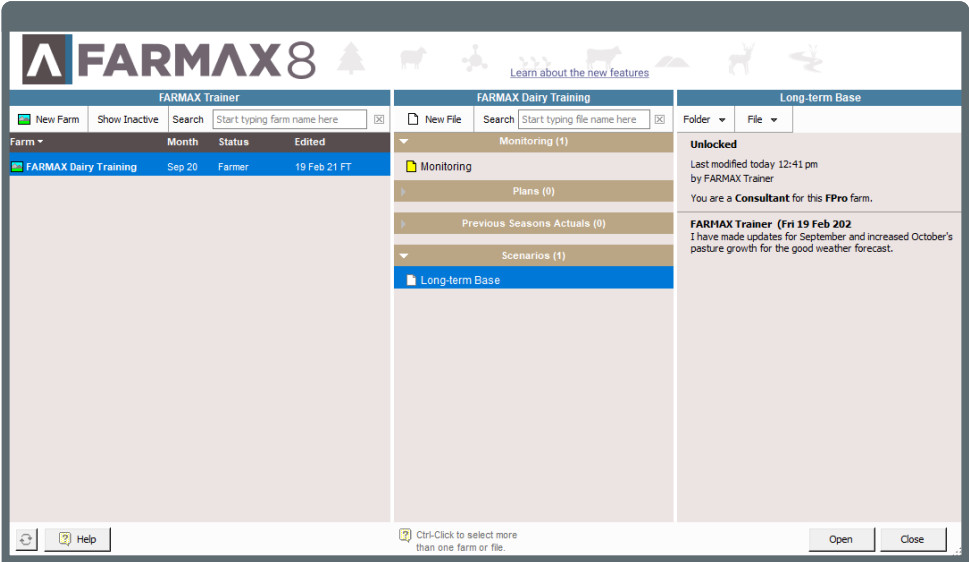


Figure 6: Cloud window

Converting to long-term mode

Activity

If any mobs have birth years associated, (e.g. Heifer Calves 20), right-click and select **Rename**. Retype a new name that removes the birth year (e.g. Heifer Calves).

Then, select the **Tools** menu and click **Convert to Long Term**.

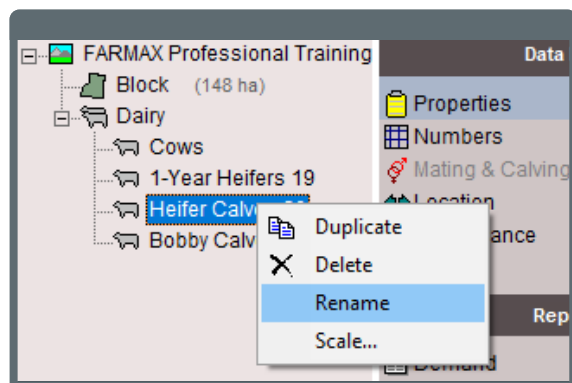


Figure 7: Cloud window

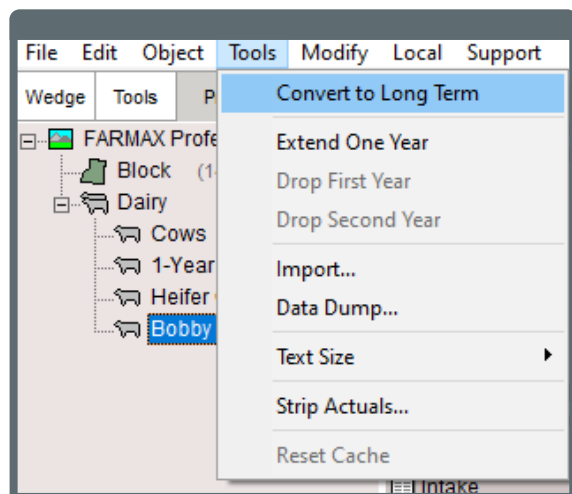


Figure 8: Cloud window

Age up mobs (except Mixed Age Mobs) in the Properties screen of each mob. Use the **Aged From** drop-down to age stock up from the previous age group.

Once all mobs have been aged, alter the stock reconciliation to ensure opening numbers equal closing numbers.

Also ensure that the opening supplement quantities equal the closing supplement quantities.

Once the stock and supplements are balanced, click on the **Tools** menu and then select **Strip Actuals**. Untick **Calved Spread** and then click **OK**.

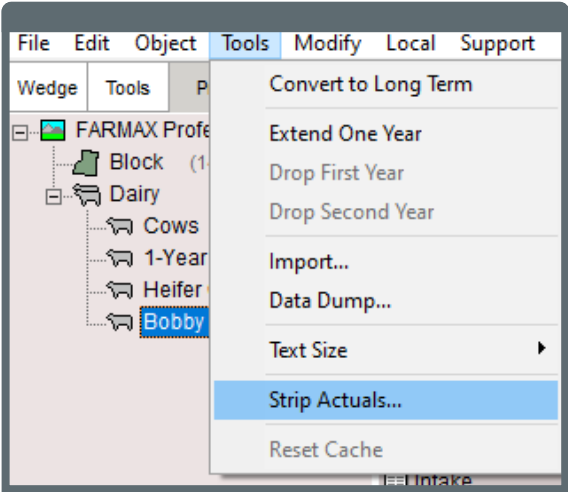


Figure 9: Cloud window

Duplicate the long-term base file by repeating the process outlined in step 2.

Then, you will be able to rename the file appropriate to the scenario you will analyse, for example, Lower Stocking Rate.

Update the file

Activity

You will now be able to make changes to the FARMAX file in order to take advantage of opportunities or to mitigate challenges.

Possible options include:

- Changing stock sales
- Applying capital fertiliser

- Altering cropping policy
- Removing effective area for forestry
- Going once-a-day

Once you are satisfied with the scenario in FARMAX, select **Save** and then **Close**.

Note: Repeat steps 2, 3 and 4 multiple times if needed to analyse a range of different strategies before deciding which option is best for you.

Open multiple files

Activity

Click **Open** in the top-left corner to see the FARMAX Cloud window. Now, hold Control and select the base file and the scenario files, before clicking **Open** in the bottom-right corner.

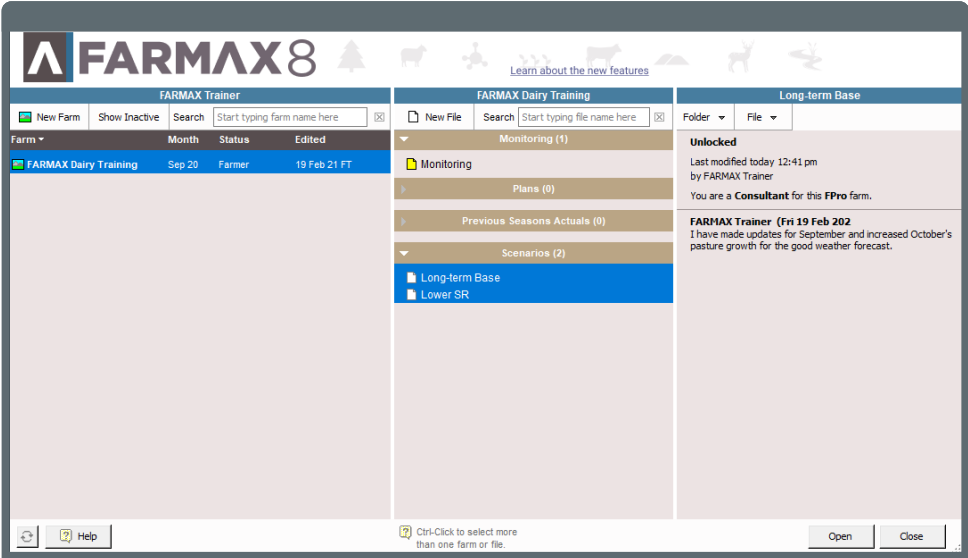


Figure 10: Cloud window

Compare reports

Activity

Multiple FARMAX files will now be open at once. Select the **All Farms** level and browse through the Compare Reports section to compare the different scenarios and the base system.

The Compare Reports section supports you to analyse each scenario and identify which is best for you.

Note: For purposes of short-term scenario analysis, do not use Combined Reports.

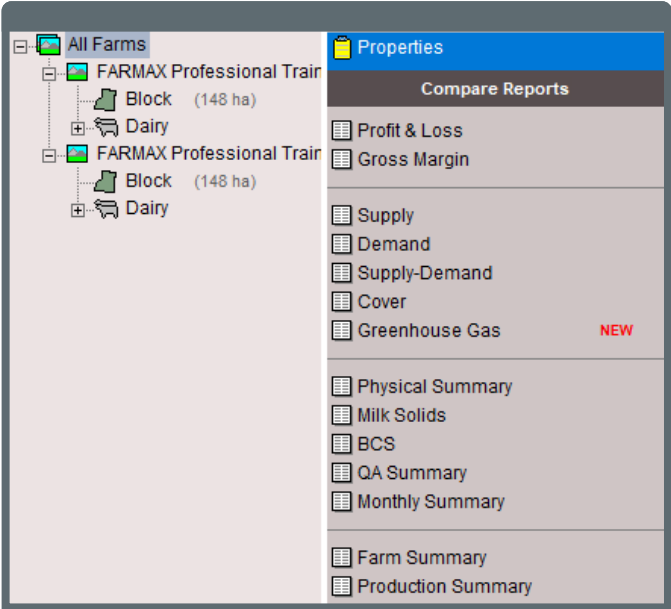


Figure 11: Cloud window



YOUR ADVANTAGE

For enquiries relating to this activity
manual please contact:

Farmax HelpDesk

0800 327 629
support@farmax.co.nz

Waikato Innovation Park
1 Melody Lane
Hamilton 3216

farmax.co.nz

FARMAX

FARMIQ